

TSLI SPECIAL EMPLOYMENT PROGRAM (SEP) provides job training and paid employment in a supported work setting. Workers gain experience working as part of a maintenance and/or painting crew.

SEP work crews are supervised by a participant who has advanced through the maintenance program to the position of Crew Chief.



In addition **SEP** staff provide participants with

- ◆ Vocational/educational assessment
- ◆ In-Services in work adjustment and job search
- ◆ Career counseling
- ◆ Job placement and monitoring

SEP participants may be Pathways residents or from other community based residences and programs.

Over 100 workers have participated in **TSLI SEP** vocational programs since the programs inception.

HOW YOU CAN HELP

Gifts of Cash The simplest way of giving and the most beneficial, is to give a tax-deductible cash donation. You have the ability to specify which program you wish to support or you may designate money for special projects/funds.

Planned Giving You can choose to leave money/assets to the agency at the time of your death or invest money so that you, the donor, receives benefits during your life and then bequeath the remaining funds to HHB's Programs.

Donated Items You can also help by donating items on our Wish List. You will receive a written acknowledgment of your donation on which you may place a monetary value.

Silent Auction Prizes An important part of our annual fund raising event is our Silent Auction. Guests bid on donated items and all proceeds go to our programs. You can help by donating a prize (gift certificates, sporting or show tickets).

Donation Drives Another great way to help is to conduct a donation drive. Asking your co-workers, friends, and family or club members to donate a few items is an easy way to contribute. Items that are always needed (and greatly appreciated) can be found on our Wish List.

Visit our website for additional donation information and to view our Wish List.

Our door is open...

Transitional Services of NY for LI, Inc.
840 Suffolk Avenue
Brentwood, New York 11717

(T) 631.231.3619

(F) 631.231.4754

General Inquiries: admin@tsli-hhb.org
Employment: personnel@tsli-hhb.org
Intake Department: intake@tsli-hhb.org

www.tsli-hhb.org



Touching Lives...

TSLI PATHWAYS
A Mental Health Program

TSLI SUMMIT
A Permanent Housing Program

TSLI SEP
An Employment Program

and
...Empowering Dreams

TSLI PATHWAYS is a progressive community residence program that provides housing and support services for psychiatrically disabled adults. Our services enable participants to live in the community as independently as they are able.

Applicants must

- ◆ Meet the criteria for Serious and Persistent Mental Illness (SPMI)
- ◆ Be age 18 or older
- ◆ Be a resident of Suffolk or Nassau County



Pathways staff assist program residents with

- ◆ Money management
- ◆ Medication management
- ◆ Food shopping
- ◆ Meal preparation
- ◆ Problem solving
- ◆ Communication skills
- ◆ Use of community resources
- ◆ Socialization and recreation
- ◆ Vocational/Educational skills

Pathways residents may engage in volunteer work, continuing education, supported or competitive employment. Community based continuing treatment programs are available to those who need structured activities and daily therapy.

Pathways offers the following programs to prepare residents for independent living:

The **Supervised Living Program** provides 24-hour staff support and a structured program that includes training in daily living skills, social/recreational activities and medication monitoring.



The **MICA (Mentally Ill Chemical Abusers) Program** is a specialized program which provides enhanced monitoring of resident activities and money management skills which assist MICA residents to stay drug and alcohol free.

The **Low-Demand Program** provides support and supervision to chronically ill residents who have been unable to sustain independent living.



The **Apartment Program** offers opportunities for more independent living in the community. Staff provide the level of support and assistance each resident needs.

Pathways residents participate in annual events organized by staff such as a Talent Show, the Spring Fling dance, a day of sand and fun at Fire Island and Field and Track Day.

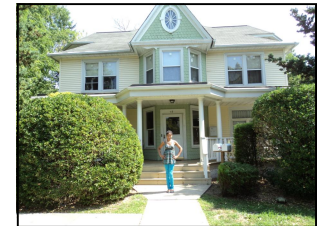


TSLI SUMMIT is a permanent housing program that provides housing and support services to homeless adults and families who are SPMI. Staff are available 24 hours a day for crisis management.

Applicants must

- ◆ Meet the HUD criteria for ðhomelessö or ðchronically homelessö.
- ◆ Be SPMI.
- ◆ Families must include at least one member who is over 18 and SPMI.

Summit provides residents with a variety of support services to assist them toward self-sufficiency.



Residents may choose

- ◆ Life skill development
- ◆ Socialization and recreation
- ◆ Medication management
- ◆ Household management training
- ◆ Financial planning
- ◆ Parent skill training
- ◆ Employment assistance

Summit staff assist residents to establish a community network through referrals to

- ◆ Entitlements
- ◆ Child care
- ◆ Health services
- ◆ Substance abuse prevention
- ◆ Educational/vocational/employment resources
- ◆ Transportation